



NATIONAL PARKS COMMISSION

Annual Report 2009



Co-operative Republic of Guyana

**National Parks Commission
Annual Report
2009**

Table of Contents

	Page
1.0 Executive summary	2
2.0 Mission Statement	4
3.0 Organization and Management	4
3.1 Organizational Chart	5
3.2 Description of Divisions and Departments	6
4.0 Summary and Review of Current Year's Programme	8
4.1 Division 1 – National Park and Joe Vieira Park	8
4.2 Division 2 – Botanic Gardens	14
4.3 Division 3 - Zoological Park	17
4.4 Division 4 – Kaletour National Park	20
5.0 Appendices	26
5.1 Budgeted and Actual Recurrent Expenditure	26
5.2 Budgeted and Actual Capital Expenditure	26

Capital Expenditure

The improved infrastructure particularly at the Zoological Park during the year as part of our ongoing upgrading program enabled the efficient thereby contributing to improved presentation.

This is evidenced by the showcasing of the and aquatic birds

The new equipment was acquired for the operations fleet this has allowed for improved efficiency within the Operations Division.

Over 2009, the NPC continued its partnership with the local community of Chenapou and other important stakeholders in furthering the work of the National Parks Commission.

We continue to work with the Chenapou community and will the draft Kaieteur National Park Management plan.

Capacity will be further developed among the staff and the infrastructure development was complete with the Park being out fitted with the establishment of a Visitor Arrival Centre with full office and communication facilities.

The year also saw a substantial increase in visitors to Kaieteur and improved and expanded souvenir lines with several promotional materials such as book marks, post cards, etc.

Finally we are pleased with the growth of our partnerships, especially as it relates to education and awareness as this is a cross cutting subject that will have a long term impact on our society. In this regard NPC / Zoo collaborated with Courts Guyana in upgrading the Kiddies Play Park in the Zoo. We recognize the vital importance of early preparation and training. We conducted the Zoo Camp a joint education and awareness project, with participants from the EPA, Guyana Forestry Commission, WWF and likeminded Agencies within the Sector.

Over the last year NPC has received substantial funding from WWF for work at Kaieteur National Park. Support was also obtained the German Government in funding the Visitor Services at Kaieteur.

2.0 Mission Statement

Managing the natural and cultural resources of the National Parks on behalf of the people of Guyana through conservation, education and awareness while affording the opportunity for open air recreation for future generations

3.0 Organization and Management

The Vision of the NPC is to develop and maintain public amenity environment, conducive to healthy open air recreation thereby affording citizens and visitors enjoyment of Guyana's natural beauty through conservation, education and awareness.

National Park

The National Park was established in 1965 and named The Queen Elizabeth II National Park to commemorate the Queen's visit to Guyana.

It was officially opened on February 5 1966 and later that year renamed the National Park when Guyana attained independence.

The National Park occupies 57 acres of land at Thomas Lands and is located on part of what was formerly Plantation Thomas.

Zoological Park

The Zoological Park was opened on January 1 1952; it is located within the Botanic Gardens and occupies four (4) acres of land.

There are currently 84 exhibits within the Zoo and 232 animals representing 39 species

Botanic Gardens

On April 3 1877 a resolution was passed by the Royal Agricultural and Commercial Society to establish the Botanic Gardens.

The Gardens was established on April 4 1879 on 185 acres of land.

It currently occupies 96 acres of land extending from Vlissengen Road in the west to Sheriff Street in the east. It houses several varieties of tropical plants and many historical and cultural artifacts.

Kaieteur National Park

The Kaieteur Falls was created by ordinance No.41 of 1929 and has a size of 116.6 km sq. In 1999 the park was increased to maintain the integrity of its ecosystems as well as allow for effective management

Joe Vieira Park

This area was designated a Park on the 24th March 1982.
It is situated on the West Bank of Demerara.

3.1 Organizational Chart

The National Parks Commission has a total of 115 staff across the five parks.

This includes the Administrative Staff at the Head Office and an Accounts Department;

The maintenance Department falls under the Deputy Manager / Operations Manager and consists of the Mechanical, Electrical and Building and Infrastructure Maintenance, and the Security Divisions.

These areas serve the various Parks with the exception of the Security division for the Joe Vieira Park and Kaieteur Park which is combined in the description of the Wardens.

The National Parks Commission is challenged by the absence of a Park Manager at Kaieteur National Park to supervise the day to day operations of the park. In addition, the very limited technical staff in middle management / supervisory positions makes management of the Commission laborious as Management has to be involved in every minute aspect of the operations; this detracts from the larger matters that should be engaging the attention of upper management.

3.2 Description of Divisions and Departments

The National Parks Commission (NPC) was established in March 1972 to manage, control and develop park areas; and work in collaboration with local government authorities in the establishment of new parks.

The Commission is governed by the National Parks Act No.23 of 1977.

In 1984 the mandate for management responsibility for the Botanic Gardens and Zoological Park was given to the NPC.

The Kaieteur National Park is governed by the KNP Act Chapter 20:02 of 1929. This was amended in 1999 to extend the boundaries to 242 sq. miles and in 2000 amended to reflect indigenous people's rights to use the area for traditional and subsistence activities.

This Act constitutes a certain are of land in the vicinity of the Kaieteur Falls on the Potaro River in the county of Essequibo a National Park and provides for the control of the said park and for the preservation of the natural scenery, fauna and flora of the Park.

It further provides for use of the Park in accordance with the rules, where it is not lawful for any person to enter into, travel or encamp within the park or to build any structure therein, or to hunt, chase, catch, shoot at, kill or otherwise disturb the soil by mining or other operations within the park or to remove anything whatsoever from the park except in accordance with regulations made under the Act.

Currently NPC has under responsibility the following divisions:

- National Park
- Botanic Gardens
- Zoological Park
- Joe Vieira Park
- Kaieteur National Park

The technical / operational divisions are assisted by the Administration and Finance Divisions to carry out their respective mandates.

The National Parks Commission's functions are to:

- Maintain and regulate the use of any designated park so as to leave it unimpaired for the enjoyment of future generations
- Make recommendations to the National Trust to achieve the conservation of the natural beauty of any area of land in Guyana and to carry out such acts as the National Trust directs for the purpose of attaining the objectives of those recommendations;

- Collaborate with local government authorities in developing any area of land subject to the control of any such authority for the purpose of affording to members of the public opportunity for open air recreations;
- Provide to local government authorities maintenance services in respect of Parks on such terms and conditions as the Commission sees fit
- Give general advice to the Minister or any statutory body in relation to the provision or improvement of opportunities for the enjoyment of the country side by members of the public.

4.0 Summary and Review of Current Year's Programme

4.1 Division 1 –

National Park

The National Park and Joe Vieira Park serves to provide areas of relaxation and recreation for the public.

It offers arenas for various sport disciplines as well as picnic areas and open spaces for relaxation.

In addition to providing and maintaining places for enjoyment the Parks also serves in other areas of environmental education and cooperation's.

- Revenue generation was the primary focus on all the locations, by way of improved and expanded services as well as tendering for new maintenance work.
- An Agreement was signed with the Guyana Agricultural and Workers Union to recognize this union as the bargaining unit for the employees. This began after the former union lost recognition due to dwindling membership.

Finances have been closely monitored with controlled spending

The National Parks Commission has registered under the Occupational Safety and Health Act No. 31 of 1977 and is in the process of establishing the OS&H Committee.

Major Activities held in the National Park

- Children's Mash parade
- Republic Day Activities
- Kite Flying, Easter Holiday- Sunday / Easter Monday
- Independence Celebrations
- Arrival Day Celebrations
- Emancipation Day Celebrations
- There were also several games of cricket and a number of shows and various events held in the Stadium area
- In the *Sport Fields* several disciplines are practiced including cycle training and matches, athletic training, football and the opening of the Rugby Season with the Bank DIH Sevens Tournament was hosted.

The National Park assists the Ptolemy Reid Rehabilitation Centre with therapy sessions by allowing the use of the ponies by the children this enables an essential part of the physical rehabilitation therapy for the young patients in need of our services

In addition to improving the state of their physical and mental condition it also doubtlessly provide a source of much enjoyment and enrichment in their lives.

Inter-Agency Collaboration

- Coordinated activities between the National Parks Commission and the Environmental Protection Agency in observance of International Day of Biological Diversity
- World Biodiversity Day Tree planting exercise May 22 2009 in collaboration with Ministry of Education
- National Workshop, Promoting Competitiveness in the Tourism Sector
- Hosted the Caribbean Central Bank Games

There are agreements with the other agencies such as the Environmental Protection Agency, the Guyana Forestry Commission, Geology and Mines Commission, Ministry of Public Works and Communication to name a few for services rendered to the National Park Commission.

Advisory assistance from other agencies is sought informally as the occasion demands. In addition there are local cooperative agreements such as those between certain parks under the National Parks Commission and other organizations.

Staff Development

Staff was exposed to training opportunities in the following areas:

- counterfeit note detection by the Bank of Guyana

Corporate Support

This has been strengthened with many business donating benches to the park and Banks DIH and the Lions Club of Bel Air donating bins.

Negotiations have been successful and have resulted in the Inner Wheel Club of Georgetown and GT&T agreeing to jointly fund the complete rehabilitation of play land in the National Park. This will not only allow a safe area for play in a clean and secure environment for kids but will also bring back the pony rides to the Park on holidays and weekends.

The relationship with the private sector is ongoing and expanding

NPC Stakeholder Participation

Below is a list of the Important Meetings Attended under the period of Review

- 12.5.09 Site Visit Providence Stadium Re: Landscaping for Cricket 2010
- 07.5.09 Meeting with IFAW
- 28.5.09 Promoting Competitiveness in the Tourism Sector, Bureau of Standards Workshop
- 21.5.09 Stakeholder Workshop – National Capacity Self-Assessment Project
- 09.6.09 Workshop on Watershed Management Plan for Guyana
- 23.6.09 National Biodiversity Committee, Assessment of Capacity Building Needs

Infrastructure

This has been generally routine and included work such as repairs to all bridges in the National Park, maintenance work on the stands, fences and other infrastructure, Security gates were installed on the stage on the tarmac

Education & Awareness

This has been addressed in a number of ways; through the recognition of environmental days, where public figures are invited to plant a tree with school kids; through television programs; On March 3 2009 appeared on the Guyana Today Show- NCN to highlight the activities of the National Park and sensitize the public to the vision of the Commission



Minister Sheik Baksh planting a tree with school kids to mark World Biodiversity Day May 22 2009

Security Issues

Security of the Parks has been a challenge given the vast areas with limited security personnel.

Under the 2008 capital program for the NPC we were granted security systems which have been installed in the critical areas of asset storage. This has contributed to improved security on all the locations.

Several reports have been received by the general public that vehicles are broken into when parked in the Carifesta Car Park. The NPC has since instituted security during the peak exercising hours.

The period under review has been incident free.

During this period in an effort to further expand and improve the security of the National Park an evacuation plan for the stadium area was developed and implemented in conjunction with the Guyana Fire Service and Guyana Police Force.

Revenue Generation / Fund Raising

This is ongoing and constantly being expanded. With the acquisition of the new equipment we have been able to be even more competitive.

With the enhancement works done to the stadium area, an increase in the shows being held at the Park have observed.

Night cricket under the flood lights is also a new revenue generating feature.

Training & Capacity Building

This is continuous. Whatever opportunities are available staff are encouraged to participate.

Personnel Matters

Defended the Commissions' position of dismissal of a labourer and the Assistant Accountant with Union- GAWU and with the Ministry of Labour respectively.

Matters of Concern

A very serious matter has arisen whereby the Guyana Power and Light Inc. has changed the tariff from commercial to Industrial and with that the multiplier to 400. This has resulted in a stark increase in the electricity bill for the Park.

The National Parks Commission has requested the intervention of the Public Utilities Commission after several attempts to discuss the matter with GPL were unsuccessful.

Joe Vieira Park

Administration

There is a caretaker assigned to the Joe Vieira Park who has responsibility for the basic maintenance and sanitation of the Park. Along with him is a general labourer who is also responsible for the Park.

Monitoring is done from Georgetown with periodic visits made to the Park.

Infrastructure

Maintenance of the infrastructure is very much a challenge as theft in the area is extremely high. We are working with the Police Authorities, the Community Police Group and the Regional Chairman in an effort to combat this.

The challenges encountered are damages to fence and bridges by residence to have the cows graze in the park as well as theft of bridge material. When action is taken by the caretaker he has be subject to a number of threats to which several reports are with the local police.

Erosion is the second biggest challenge to the park as tons of soil has been washed away due to constant flooding of the park. Efforts to have land development done in a phased approach are delayed by the availability of material.

Nevertheless, work is ongoing.

Maintenance of the Park

A full time brush cutter operator is assigned to the Park.

A tractor and slasher is sent over monthly to slash the grounds. This however is affected by the high moisture content therefore making it difficult to slash in a timely manner.

Tree trimming is done quarterly; and drain maintenance monthly.

Corporate Relations

The National Parks Commission has engaged the Sports Committee of Region 3 in an effort to have community involvement in the maintenance of the park security of the infrastructure.

We feel that if the Park serves its purpose for the Community then more emphasis will be given by the residence to take care of the area.

Education & Awareness

The Park is periodically used by a group involved in the outdoor activities and the promotion of camping out doors.

While on the park they are taught the techniques of fishing; insect identification, bird watching and butterfly spotting.

The ecosystems on the park have been found to be very diverse.

Security Issues

This is a challenge, particularly in the areas of security of infrastructure- bridges and fences.

Work with the local police, community police group and the Regional Council is ongoing in an effort to control the situation.

Revenue Generation / Fund Raising

The park generates some revenue which goes back into maintenance costs.

Revenue is generated by the rental of the ground as well as from sale of advertising spaces on the fence.

With many alternative venues the rental of the Park has decreased significantly.

Personnel Matters

Minor repairs to the caretakers' house were done in an effort to improve the conditions of the accommodation provided.

This was particularly necessary as the building was badly affected by wood ants.

4.2 Division 2

Botanic Gardens

Administration

This has been routine, with specific matters addressed as they arise. Financial Management has been the same across the Commission with income and expenditure being closely monitored.

Infrastructure

Maintenance of Infrastructure has been lacking as a result of the cost of maintenance, however where possible efforts have been made to repair structures, particularly bridges and fences.

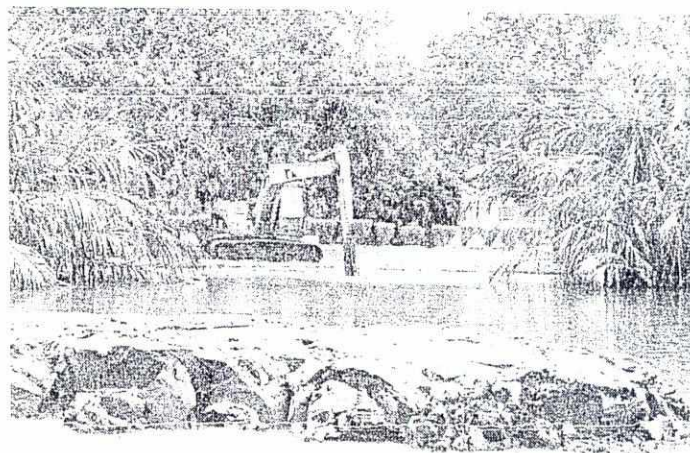
Loss of infrastructure to theft has also been a challenge.

Two foot bridges linking the Heliconia Island to the mainland on the Schomburgk Pavilion have been stolen.

During the period under review with assistance from the Ministry of Agriculture through the Drainage and Irrigation Department the National Parks Commission was able to partly desilt the ponds and irrigation canals in the Botanic Gardens.

This could not be done entirely due to the width of the ponds and the boom of the excavator not being long enough.

This work however has assisted tremendously
Efforts are ongoing to continue this work.



Hymac desilting manatee pond in the Botanic Gardens

Corporate Relations

The public sector has been somewhat supportive of the work of the Botanic Gardens. This has led to a number of feature additions in the Botanic Gardens, the most recent being a Cactus Garden.

This was done in collaboration with the Guyana Tourism Authority and the Horticultural Society of Guyana, with support from Republic Bank Guyana to the tune of over two hundred thousand dollars.

Other corporate entities such as Banks DIH and Demerara Distilleries Limited in support of our work have made donations of drums for use as bins in the Garden.

Corporate relations are ongoing as we plan for the launch of a butterfly house and garden later this year, the establishment of a rock garden and the development of a Chinese Garden, in addition to planning for the 131 Anniversary Year of the Botanic Gardens.

Education & Awareness

This is ongoing as we strive to develop an appreciation and understanding of the local flora and its integration in the ecosystems.

Bird watching is developing and has developed into a hot spot for bird watchers.

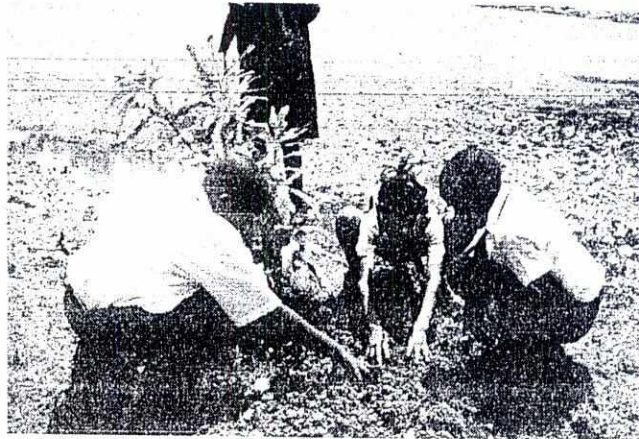
Several awareness events have been held involving students and adults alike.

Participation in the Horticultural Society of Guyana Annual Show and plant sale is not only revenue generating but also allows us to market ourselves and the services and messages we offer.

We have participated in a series of television programs, on January 6 2009 appeared on the Guyana Today Show- NCN to highlight the activities of the Botanic Gardens and sensitize the public on our work.

On Earth Day April 22 2009 a tree planting exercise was done in the Botanic Gardens where schools were invited to participate.

A total of 25 trees were planted from among 15 schools.



Tree planting with schools to mark World Earth Day, April 22 2009

Security Issues

The recent security system installed under the 2008 capital program continues to aid in security at the Botanic Gardens. This coupled with the guards have kept the Botanic Gardens safe and incident free during this first half of 2009.

Revenue Generation / Fund Raising

This we have tried to constantly expand with additional services at the nursery. On select holidays we charge a parking and vending fee, which is used to offset the cost of cleaning and balances go towards a revenue generation item.

Training & Capacity Building

There are approximately 25 employees in departments such as administration, admissions, plant health, plant husbandry, maintenance and planning and development.

Training is usually in house and done in partnership with other agencies such as the Ministry of Agriculture, Farfan and Mendes and Guyana School of Agriculture.

4.3 Division 3

The Zoological Park

The Zoological Park was opened to the public on January 1st 1952. It covers an area of 4 acres and houses 104 cages, with 89 species and 130 animals.

Nature School

For 2008 a total of 5,298 students (2521 boys and 2777 girls) visited and 258 teachers

Grants

Nature School Renovation

In July the NPC received a grant of 3,755,887. from the Canadian International Development Agency for the renovation of the Nature School in the Zoological Park.

Education and Awareness

- ***Nature School***

The Nature School in the Zoological Park on an average has five thousand students passing through the School and Zoo for a structured lesson and practical session per annum.

Everyday two schools are brought into the Zoo with the "Zoo Bus" a 36 seater bus which was made possible through donations from several Zoos, and likeminded organizations.

The kids are brought from as far as the West Coast, West Bank, East Coast and East Bank and spend approximately 2 ½ hrs. per session.

Materials and teaching aids are prepared by the Nature School Lecturer; other materials such as posters, colouring books etc. are supported from various donors such as World Wildlife Fund- Guiana's (WWF) which are distributed to the students for their class rooms.

Every Wednesday, the Environmental Protection Agency does a guest feature and presents a lesson on a particular environmental topic to the visiting class.

School Yard Ecology

On 16th and 17th July 2008 a two day school yard ecology seminar was conducted at the Nature School by members of the Environmental Protection Agency

Turtle Seminar

Two day turtle seminars were held on August 25th and 26th and 27th and 28th August these were fully funded by the WWF

Below are the details of the 2011 visitation to the Nature School

Month	No. of Schools	Total No. of Students	No. of Teachers	Sessions Held	Sessions Lost
January	25	695	32	25	1
February	24	866	139	24	2
March	31	970	42	31	2
April	1	32	1	1	-
May	5	152	9	5	-
June	22	751	45	22	-
July	<i>Closed</i>	<i>for</i>	<i>school</i>	<i>holiday</i>	-
August	<i>Closed</i>	<i>for</i>	<i>school</i>	<i>holiday</i>	-
September	20	600	40	20	-
October	10	260	15	10	2
November	38	1216	76	38	7
December	14	300	20	14	due to elections
Total	190	5842	419	190	15

In addition to the Nature School Classes there is also a reference library that students preparing for CXC and Common Entrance use to assist them in completing assignments and course work.

■ *Zoo Camp*

Every year the Zoological Park holds a Camp called the "Zoo Camp" which runs for four weeks with altering aged kids, 6-9 and 10-14;

This is designed to have the children engaged in meaningful fun exercises while at the same time learning something that has an impact on society and the environment. One Camp runs for a week and consists of several activities such as field trips, tree plantings, feed the manatees, educational videos, pony rides, lecture and activity (question & answer) sessions etc.

Various guest speakers are also invited from the Guyana Horticulture Society, the Environmental Protection Agency etc.

This is supported also through donations of materials, snacks and volunteering of time.

▪ **Zoo Volunteers**

The Zoo is supported by a group of young people called the "Zoo Volunteers" who visit primarily on weekend and holidays and assist in three main areas which include:

- ✓ "Policing of the Grounds" – this involves patrolling the grounds of the Zoo to ensure that visitors don't tease, poke, feed and injure the animals.
- ✓ Cage-side Talks – this involves the identification of specific species of animals and giving visitors a brief on the interesting facts of that species.
- ✓ Conducted Tours – groups of visitors can request a Tour of the Zoo either on specific species or a complete tour of the Zoo (as is requested)

▪ **Donations**

New Species at the Zoo

During the latter part of 2009 the Zoological Park was in receipt of several donations of animals particularly in the area of birds and snakes.

With the donation of snakes we were able to enhance the exhibit significantly making it more interactive for visitors.

▪ **Visitation**

The Zoological Park continues to attract a constant flow of visitors with an average visitation of approximately ten thousand persons per month

During the course of the year several special groups also visit the Zoological Park.

4.4 Division 4

Kaieteur National Park

Kaieteur National Park, Guyana's first national park and legally protected area, is currently managed by a Board of Directors. The NPC is the implementing arm of the Board.

The challenge for the future is to maintain the delicate balance between preserving this pristine environment and allowing Guyana to benefit from sharing this treasure with the world.

The National Parks Commission, the implementing arm of the Kaieteur National Park Board over the year in review focused on several areas for improvement at the Park.

The major activities have been detailed below.

Training and Capacity Building

The National Parks Commission is fully committed to providing training and capacity building for staff of the Commission.

Enhanced abilities allow for staff to perform at a higher level and improve outputs and efficiency.

Infrastructure

Basic infrastructure is a major need at the Kaieteur National Park; noting this, efforts have been made to expand the services and improve upon existing structures combining them all into one central place serving the needs of the visitors.

- Cruise Ship Minerva II

The Kaieteur National Park over the Easter Weekend hosted approximately 80 guests, passengers of the Cruise Ship Minerva II which docked at the Georgetown port.

Tourism

An internal review was undertaken of our Tourism product using the feedback from both the local and foreign tour operators along with consultation with a number of persons working in the industry in Guyana.

The Botanic Gardens and Kaieteur National Park are two very important sites for birding and nature tourism in Guyana. It offers acres of undisturbed areas and affords fantastic views of the forest; an abundance of birds, great biodiversity and meaningful connections to the community – both city folk and the indigenous community.

There are infrastructural and operational challenges, but progress is being made and the organization is committed to the development of the product.

There has been an urgent need to improve and expand the current accommodation at Kaieteur National Park for tourists.

In the first quarter of the year, the Commission focused on hospitality service rates to better cater for foreign and local tourists, researcher and volunteers. The rates have been calculated based on the actual costs of operation, associated with current industry standards and then adjusted against minimum acceptable occupancy rates for an interior tourism product in Guyana.

Visitor rates are the highest on record, registering a growth over the previous year.

Visitors to the Centre, with occupancy rates for 2008, are presented below.

WWF Guiana's is giving much needed financial and technical support to the NPC with specific attention to the Kaieteur National Park to enable the management of Kaieteur National Park. The first protected area established in Guyana in 1929 and famous for the falls, valuable minerals and endemic and rare biodiversity has been without an integrated management plan for the entire park. This WWF funded project will extend over a 21/2 year period and shall provide resources for the development and initiate implementation of an integrated management strategy for KNP. As part of this support, options for tourism development and other income generation opportunities will be investigated.

A vital component of this project is the strong focus on stake holder participation within all aspects of development management strategies for the park. Stakeholders including community members of Chenapou Village, tourism operators, other user groups and regulatory bodies will participate in all levels of the project. The Environmental Protection Agency will play an important role in guiding the management planning process during the project.

It is the intention that at the end of the two year period a well-defined strategy will be developed to ensure holistic and effective management of the park, with minimal negative impacts and improved benefits for peoples and communities adjacent to the park.

An agreement between the donor (WWF) and the benefactor (NPC) was signed on January 30 2009 and interviews for positions of Project Coordinator, Project Assistant, and Consultants in the areas of Tourism, Geographical Information Services and Protected Areas Specialist were done.

The KNP Planning Process was launched on June 25 2009 and the first public consultation held. A series of individual consultations have begun in with various stakeholders both in Georgetown and in the Community of Chenapou.

Man & Biosphere Committee

The MAB Committee was established years ago with the lead taken by the University of Guyana under the chairmanship of Derrick Bernard. Since his demise, the program became dormant.

This Committee, now resuscitated in April of this year in collaboration with the University of Guyana, Faculty of Natural Sciences has been addressing a revised agenda that is based on progress reports by the various institutions after the International Workshop on Amazon Biosphere Reserves which was held on April 24-26 2006 in Guyana.

The National Parks Commission is part of this new committee; with specific interest for the Kaieteur National Park.

Biosphere reserves are areas of terrestrial and coastal / marine ecosystems, or a combination thereof, which are internationally recognized within the framework of UNESCO's Program on Man and Biosphere (MAB). They are established to promote and demonstrate a balanced relationship between humans and the biosphere. Biosphere reserves are designated by the International Coordinating Council of the MAB Program at the request of the State concerned. Individual Biosphere Reserves remain under the sovereign jurisdiction of the State where they are situated. Collectively, all biosphere reserves form a World Network in which participation by States is voluntary.

Construction of a Visitor Arrival Centre continues -

Under the KfW grant the National Parks has been able to acquire funding for the construction of a Visitor Arrival Centre. An agreement was signed on February 5 2009 between the Environmental Protection Agency and the National Parks Commission for the construction.

The project is said to be the most expensive of all the KfW projects at a cost of forty five million eight hundred and sixty eight thousand, two hundred and eighty seven. The Contractor Tolack Narine Singh was awarded the contract through the National Tendering Process.

The performance period is 217 days, commenced on March 25 2009

Progress to Date

Despite minor hiccups from time to time during the project the works continue to be on target with 25% of works completed. The technical works of the project are being monitored by the E&A Consultants Inc.

All dressed materials were transported to Madhia via road and then shuttled to Kaieteur

"rough" material is being supplied by the neighbouring community of Chenapou. Materials and workmanship were visually inspected and tested on site by the consultant. A twenty eight day concrete compressive strength test for the foundation was carried out at the University of Guyana's Civil Engineering Laboratory at Turkeyen.

On May 4 2009 the contractor was instructed to stop all works as a result of the breach of Appendix 1 of the contract – Regulations Governing Kaieteur National Park.

A penalty was imposed and the contractor warned and subsequently allowed to recommence activities.

Construction of Rest House & Wardens Quarters

Under the KfW grant the National Parks has been able to acquire funding for the construction of a Rest House & Wardens Quarters at Tukeit, Kaieteur National Park. An agreement was signed in the later part of 2008 between the Environmental Protection Agency and the National Parks Commission for the construction.

The project costs twenty three million, eight hundred and thirty three thousand, nine hundred and fifty dollars. The Contractor, Aubrey Changlee of Project Design and Construction was awarded the contract through the National Tendering Process.

The performance period is six months, started on January 31 2009 and expected to be completed on June 15, 2009

A request for extension was made by the contractor and after some discussion with the EPA and GFA it was granted.

At this point the project was two months behind schedule. Several warnings were given to the contractor to bring the project back on timeline. The technical works of the project are being monitored by the E&A Consultants Inc.

Material was being transported to Madhia via road and then transported via river to Kaieteur. This included sand and stone. Materials and workmanship were visually inspected and tested on site by the consultant. A twenty eight day concrete compressive strength test for the foundation was carried out at the University of Guyana's Civil Engineering Laboratory at Turkeyen.

On May 4 2009 the contractor was instructed to stop all works as a result of the breach of Appendix 1 of the contract – Regulations Governing Kaieteur National Park.

A penalty was imposed and the contractor warned and subsequently allowed to recommence activities.

The contractors' performance to date has been very poor and unsatisfactory. His progress is being closely monitored over the next 14 days for improvements.

Education & Awareness

Web Site- The KNP website was redesigned and information upgraded.

The generic material, posters, newsletters, brochures continue to be available at three locations- the Kaieteur Souvenir Shop at KNP, the Zoological Gift Shop at the Zoo and at the NPC Head Office.

The 11th Friends of Kaieteur Night was held at a new venue, the stage at the National Park on May 19, 2009. Approximately 50 persons attended from within the sectors of environment, tourism and general interest. The guest speaker was a research student from the University of Minnesota Beth Petit who spoke on the Golden Frog believed to be found only at Kaieteur.

Security Matters

Nevertheless discussions have been held with the Commissioner of Police for a permanent police presence at Kaieteur Top given the fact that the closest police presence is at Mahdia some distance away. In an effort to expedite this Commission has committed to providing accommodation for the ranks.

All of the wardens were sworn in as supernumerary constables with specific focus on illegal mining and logging.

Financing / Revenue Generation

Funding for Kaieteur National Park is realized primarily from two sources, subvention from Government and revenue.

Revenue comes in several forms; park tickets, sale of souvenirs, tour guide fees and guest house accommodation.

Subvention received is directed to wages and salaries while revenue goes to other statutory expenses and supports operations.

Conservation projects and education programs are met from donor funds or grants.

Training & Capacity Building

This has been ongoing in the areas of tour guiding, ranger training and hospitality services.

Personnel Matters

Following the suspension of the Senior Warden Laurence Gibson for misconduct a decision was taken to assign him to the Georgetown office where he was mandated to develop a Kaieteur National Park Tour Manual.

Roy Mendonca was appointed Senior Warden with specific responsibility for operations, and accountability for stocks and equipment.

Major Workshops / Meetings NPC Attended and Participated in.

- Workshop to discuss draft report to the United Nations Convention on Biological Diversity
- REDPARQUES Latin American Technical Network for Natural Parks-"Conservation Experiences of Local and Indigenous Communities in Protected Areas of the Amazon Region

A significant increase in revenue was realized through guest house visitors and the souvenir shop.

