

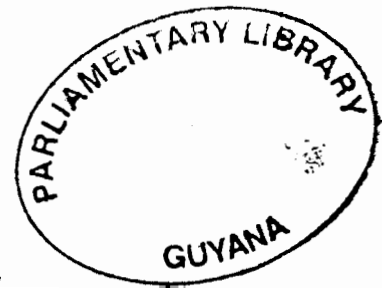
**Co-operative Republic of Guyana
Guyana Prison Service**



ANNUAL REPORT

**For
The Year
1994**

**Guyana Prison Service
46 Brickdam,
Stabroek,
Georgetown.**



C*O*N*T*E*N*T*S

1.0	Executive Statement
2.0	Mission Statement
3.0	Organisation and Management
3.1	Operations - Georgetown Prison
3.2	Operations - New Amsterdam Prison
3.3	Operations - Mazaruni/Sibley Hall Prisons
3.4	Operations - East Coast Prison
3.5	Operations - Timehri Prison
3.6	Operations - Finance Section
4.0	Summary and Review of Year's Programme
	(a) Discipline - Staff
	(b) Discipline - Prisoners
4.1	Amnesty
4.2	Escape and Recapture
4.3	Literacy Development Programme
4.4	(a) Sports and Leisure Activities - Staff
	(b) Sports and Leisure - Prisoners
4.5	Prisoners' Earning and Incentive Scheme
4.6	Prison Self-support Scheme (PRISS)
4.7	Prisoners' Tuc-shops
4.8	Prisoners' Health

A P P E N D I C E S

"A"	Organisation Chart - Guyana Prison Service
"B"	Establishment and Strength
"C"	Staff Training
"D"	Escapes and Recaptures
"E"	Prison Population
"F"	Daily Average Population
"G"	Comparative Daily Average Population (1990 - 1994)
"H"	Admission from the Courts
"I"	Classification of Admission
"J"	Distribution of Sentences
"K"	Number who Paid Fines
"L"	Convicted Prisoners Admitted 1990 - 1994
"M"	Offences for which Prisoners were Admitted
"N"	Appellants
"Nii"	Remands & Awaiting Trial
"O"	Daily Average Employed
"P"	Medical Report
"Pii"	Death of Prisoners
"Q"	Discipline - Staff
"Qii"	Discipline - Prisoners
"Qiii"	Corporal Punishment
"R"	Quantity of Farm Produce
"Rii"	Value of Ground Vegetables
"Riii"	Value of Fruits
"S"	Produce used for Feeding Prisoners
"T"	Livestock Returns (Cattle)
"Tii"	Livestock Returns (Sheep)
"Tiii"	Livestock Returns (Swine)
"U"	Comparative Value of Produce (1993 & 1994)
"V"	Quantity of Farm Produce Sold
"W"	Capital Expenditure
"X"	Current Expenditure

ANNUAL REPORT
GUYANA PRISON SERVICE
EXECUTIVE STATEMENT

The year 1994 was a commendable one for the Guyana Prison Service. It was a year during which programmes initiated in previous years began to bear fruit. As a consequence, improvement in the Department's functions of security, safe custody, training and rehabilitation of prisoners were accelerated.

This acceleration was facilitated through the generosity and commitment of Central Government which allocated funds for the various programmes.

Although faced with the continual problem of recruiting and training personnel, the year ended with an increment of twenty (20) additional ranks as against the number retained at the end of 1993 - three hundred and ten (310), as compared to two hundred and ninety (290). However, the phenomenon of a high level of female staff prevailed, numbering one hundred and twenty-three (123) and constituting 40% of ranks employed.

Staff vacancies at 1994-12-31 were one hundred and forty (140) and reflected a 31% deficiency in the required task force of four hundred and fifty (450).

The increase in the number of operational staff, the commitment of the staff and the availability of adequate funding were some of the factors which contributed to a year of relatively satisfactory performance and influenced the notable reduction in the number of escapes, which numbered thirty-six (36) in comparison to fifty (50), in 1993.

Staff training was again given priority, since Management and Senior Officials are fully aware that it is necessary to have available well trained and disciplined ranks, in order to effectively manage the Prisons, to exercise control over the inmates and to be involved in their continuous restraint. One hundred and ninety (190) Officers were trained internally and externally during 1994.

During the period reviewed \$19,317,510 were expended on the continued rehabilitation of physical structures particularly at Mazaruni, New Amsterdam, Georgetown Prisons and Prisons' Head Office.

Land Transport was also improved with the acquisition of one (01) five ton truck and one (01) mini-bus to the cost of \$4,307,000.00. The sum of \$500,000.00 was spent on acquiring agricultural tools and equipment.

Despite numerous breakdowns of the telephone system with Mazaruni, communication with all Prisons was maintained via telephones and radio communication linkages. It is expected that action would be initiated to improve this aspect in the not too distant future.

The department continued to take the initiative in order to ensure that prisoners received adequate medical care, in spite of the Ministry of Health's inability to assign medical doctors to the Prisons according to Law, Medical Service was maintained by Prison Officers who were trained as Medexes and professional nurses. There was no major outbreak of any epidemic, although a threat of chicken pox was encountered, and eradicated quickly.

The Prison Self-support Scheme (PRISS) continued to provide an avenue for the Department to earn sums of money through the marketing of prisoners' skills and labour. Two thirds (2/3) of the sums earned were retained by the department and were utilised for the procurement of commodities and services to improve the conditions of prisoners during their period of imprisonment.

Television sets, video recorder cassettes, radio and tape recorders, sports equipment, water pumps to improve the potable water supply, important and urgently needed drugs and medications, as well as X-ray services were acquired through the Priss Scheme.

The prisoners were paid one-third (1/3) of the monies earned during their exposure to useful work and training. They were required to save 25% of their benefits which was paid over to them on their release from Prison. Permission was granted for them to utilise the other portion by purchasing commodities from the Tuc-shops or to cater for emergencies within their families.

The cash balance for PRISS, at 1994-12-31, was \$1,223,391.77%.

The Tuc-shops provided convenient avenues for inmates to purchase certain commodities, thus reducing transportation costs for and time wasting by their relatives, who travelled long distances in some cases, to supply similar commodities directly to them.

The cash balance for the Tuc-shops at 1994-12-31, was \$286,383.75%.

The annual reports from Amnesty International or the Guyana Human Rights Association did not reflect any unfavourable statements about the department during 1994. However, the United Nations Report indicated that the Georgetown Prison was severely overcrowded and that poor diet, inadequate medical attention, underpaid and poorly trained staff characterised the Prison System. With the exception of New Amsterdam, the Prison Visiting Committees were inactive. The Report, however, stated that the Prison Authorities showed acceptance to suggestions for improvement. The report also mentioned that relations with the Guyana Human Rights Association continued to be strengthened through co-operation and dialogue.


The Prison Chaplain and other Religious Organisations exercised pastoral care, spiritual and moral stimulation to the inmates.

Agriculture production did not achieve its target. The reason being drainage and irrigation problems, shortage of personnel to supervise the labour force and other variables. It, however, continued to be a vital means of supplementing the prisoners' diet and of earning revenue.

The department's Literacy Development Programme continued to play an important role in the rehabilitation process.

With additional inputs from the Institute of Continuing Education, the Adult Education Association and the Non-Governmental Organisations, training advanced from the primary stage to a secondary school level of preparing inmates to attempt subjects at Examinations under the Caribbean Examination Council.

1991, therefore, is considered to be a success taking into account the several factors which affected the managerial and operational processes.


C. Kilkeny, D.S.
DIRECTOR OF PRISONS.

M I S S I O N S T A T E M E N T

THE GUYANA PRISON SERVICE HAS THE RESPONSIBILITY
FOR THE CUSTODY AND RETRAINING OF PERSONS
COMMITTED TO THE PRISON, AND TO ENGAGE IN
ECONOMIC AND OTHER SOCIAL PROGRAMMES
SUPPORTIVE TO NATIONAL OBJECTIVES"

3.1 GEORGETOWN PRISON

The Georgetown Prison is situated in Region No. 4 within the County of Demerara. It occupies a block in the centre of the city. Physically, this makes it an open target for external subversive activities and for the introduction of prohibited articles, all of which present a constant threat to the security of the Prison. It is the main admission and dispersal prison and accommodates all categories of male prisoners - convicted and untried. The daily average number housed during the year was eight hundred and seventy three (873) prisoners. The Prison was headed by a Senior Superintendent of Prisons.

3.2 NEW AMSTERDAM PRISON

The New Amsterdam Prison is located in Region No. 6, within the County of Berbice. It accommodated all categories of male prisoners of the Region. There is an annexe which separately accommodates female prisoners. Prisoners thereat are involved in agricultural production, which includes arable farming, cattle and pig rearing, milk production. Female prisoners are engaged at sewing, home management and catering. Self-sufficiency in milk and to a lesser extent green vegetables was achieved. The daily average population of male prisoners was one hundred and sixty three (163), female prisoners averaged thirty-seven (37). The prison was headed by a Superintendent of Prisons.

3.3 MAZARUNI PRISON

The Mazaruni Prison is located in Region No. 7, about forty-six (46) miles up the Essequibo River, near the confluence with the Mazaruni and Cuyuni Rivers. It is ideally suited for training long term prisoners who have always formed the nucleus of its clientele. Since it is situated in an agricultural area, the prisoners have mainly been engaged in agricultural production which included arable farming, cattle, pig and sheep rearing, milk, lumber and charcoal production.

SIBLEY HALL

A semi-open prison - falls under the management of Mazaruni Prison, it houses young offenders and adults who are classified as first offenders. The daily average population at Mazaruni and Sibley Hall was two hundred and eighteen (218) prisoners.

During 1994 the Mazaruni/Sibley Hall Prisons remained the largest agriculture unit in the service and was self-sufficient in pork, beef, milk and fruits.

The Prison was headed by a Senior Superintendent of Prisons.

3.4 EAST COAST PRISONS/LUSIGNAN

The Lusignan Prison is situated in Region No. 4 in the County of Demerara. It is located about thirteen (13) miles on the East Coast away from the city of Georgetown and about two (2) miles south of the East Coast Demerara, Public Road.

Male prisoners from the East Demerara Magisterial District are admitted there. Prisoners who have served the major part of their sentences and have about nine (9) months of their sentences to serve are also housed there. In order to fine tune their preparation for reintroduction into the Community, prisoners at this Prison are subject to reduced supervision by staff.

Activities are agriculture based with an emphasis on the cultivation of green vegetables, cattle and pig rearing, as well as production of milk. Catering and building maintenance are also taught.

The produce was utilised for the prisoners' daily consumption, surplus was disposed of by sale (mainly pork and milk) or sent to Georgetown Prison to be consumed by the prisoners there.

The daily average population was one hundred and eight (108). The Prison was headed by a Superintendent of Prisons.

3.5 TIMEHRI PRISON

Timehri Prison is situated in Region No. 4 in the County of Demerara, about twenty-five (25) miles up the Demerara River and in close proximity of the Timehri International Airport.

Young convicted prisoners whose sentences are near completion are housed there. They are engaged at arable farming and cattle and poultry rearing on a small scale. The manufacture of concrete blocks was introduced during the year of review and has provided another form of training for the prisoners.

Catering, building maintenance and environmental sanitation provided other forms of training.

Partial self-sufficiency in milk was achieved at this Prison.

The daily average population was sixty-two (62). The Prison was managed by an Assistant Superintendent of Prisons.

3.6 FINANCE SECTION

The primary objective of this section is to ensure the efficient and effective management of the financial resources available for capital and current expenditure so that the various programmes were successfully carried out. The section was engaged in the preparation and submission of vouchers to the Central Accounting Unit of the Ministry of Home Affairs. Eight (8) members of staff were engaged in this section which was headed by a Superintendent of Prisons.

4.0 SUMMARY AND REVIEW OF YEAR'S PROGRAMME

(a) DISCIPLINE - STAFF

Numerically, there was no increase or decrease in the number of recorded offences committed during the year. Offences numbered two hundred and sixty-three (263) as compared with two hundred and sixty-three (263) in 1993. Absent from duty showed a decrease, eighty-six (86) as against one hundred and eighteen (118) in 1993.

(h) DISCIPLINE - PRISONERS

There was an increase of eighty-nine (89) in the number of offences committed by prisoners; three hundred and three (303) in 1994 as against two hundred and fourteen (214) in 1993.

4.1 AMNESTY

The policy of granting amnesty to commemorate the anniversary of the Co-operative Republic was continued. Prisoners also benefitted from amnesty to mark the 28th anniversary of Independence. The condition and terms were set to influence good conduct and industry and a change in the mode of criminal behaviour.

One hundred and twenty-eight (128) prisoners benefitted from the grant of amnesty.

Special Remission was also granted to fifty (50) prisoners for outstanding performance.

4.2 ESCAPE AND RECAPTURE

Thirty-six (36) prisoners including (1) female escaped during the year as against fifty (50) in 1993. That reflected a decrease of fourteen (14) prisoners or 28%. Thirty-six (36) prisoners were recaptured while two (2) remanded prisoners were discharged at the expiration of the authority to commit them. Sixteen (16) of the escapes occurred from within the Prisons. These were attributed to the low staff level and in some cases neglect for which the defaulters were disciplined.

4.3 LITERACY DEVELOPMENT PROGRAMME

The policy of improving the level of literacy, numeracy and skills training among inmates was pursued. Staff members continued to function as school teachers, along with the able assistance from the University of Guyana students on attachment (a requirement of the Diploma in Social Work Programme), officials from the Institute of Adult and Continuing Education, Guyana Human Rights Association, Islamic Organisation, Professional Social Workers Association and the National Aids Secretariat were among several facilitators.

The number in the level of inmates literacy development was extended to sixteen (16) prisoners currently being prepared to write the Caribbean Examination Council mid 1995.

Members of staff were involved in varying Sports Disciplines during the year. The main being dominoes, whist, billiards, circle tennis, cricket, football and athletics; video shows and drama were other leisure time activities.

The Prison Service maintained its position as champion at the Combined Service Athletic Meeting for the second consecutive year.

SPORTS AND LEISURE (PRISONERS)

Prisoners were involved at chess, cultural activities including the formation of a choir, debating and drama groups, dominoes, draughts, reading and table tennis for indoor activities. Outdoor activities included boxing, cricket and football.

A prisoners' steel orchestra performed for the entertainment of their fellow inmates within the Prison. They also performed at charitable homes which included Archers' Home, Ptolomey Reid Rehabilitation Centre and Uncle Eddie's Home. The Orchestra was given a unique opportunity to entertain the crew of the visiting world environmental ship 'Greenpeace' and its invitees at a reception held on board the vessel.

Drama groups at Mazaruni and New Amsterdam performed at several public and religious functions in their respective communities. The choir at New Amsterdam was invited to perform at Religious and other Social functions.

Craft produced by male and female prisoners was displayed at exhibitions at the five (5) Prison locations during the Prison Week of Activities and on other occasions. It was expected that by their participation in those activities, prisoners would have inculcated some degree of attitudinal change.

The exercises were undertaken in order to sensitize members of the public as to efforts taken by the Prison Department to rehabilitate prisoners.

4.5 PRISONERS' EARNING AND INCENTIVE SCHEME

This scheme provided a means of influencing prisoners to be of good conduct and industry. Two dollars (\$2.00) per month were granted to each eligible prisoner, the total sum earned was paid to them on their discharge. A recommendation was made for the monthly benefit to be increased.

4.6 PRISON SELF-SUPPORT SCHEME (PRISS)

This scheme was introduced in 1991. It is designed to generate funds by marketing prisoners' skills and commodities produced by them in order to improve the general conditions of the Prison population, by providing certain amenities which are not otherwise provided through the budgetary allocations.

One third of the sums collected was divided among the prisoners who were engaged on the various projects. The prisoners were made to save one quarter ($\frac{1}{4}$) of what was paid to them. They were allowed to dispose of the other portion by way of additional saving, disbursement to relatives, at their request, to assist in maintaining their children, or utilised to purchase commodities at the Tuc-shop.

R/ . . .

Two-thirds was credited to the Sports and Social Fund which provided several benefits for prisoners, such as:-

- (i) drugs and medication
- (ii) sports gear
- (iii) television sets
- (iv) video cassette recorders
- (v) water pumps for improvement of the potable water supply systems at the various Prisons

The Cash Balance of this Scheme at 31st December 1994 was \$1,223,391.77.

4.7 PRISONERS' TUC-SHOPS

Tuc-shop, a new concept in Prison Administration in Guyana was introduced at Georgetown Prison in 1992, with a view of:-

- (a) providing opportunities to prisoners to utilise monies, either earned through the Prison's Self-support Scheme or deposited by their relatives, to purchase certain commodities which were not provided through the budgetary allocations.
- (b) reducing the possibility of prohibited articles being introduced into the Prisons and
- (c) assisting prisoners' relatives, who reside far away from the Prison, by reducing the cost of travel and time utilised to and fro, in order to supply such commodities.

Two (2) Tuc-shops were in operation during 1994, one in Georgetown Prison and the other at New Amsterdam Prison.

The Cash Balances of these shops at 31st December 1994 was \$286,383.75.

4.8 PRISONERS' HEALTH

The health of prisoners was taken care of by Government Medical Officers who infrequently visited the Prisons, Resident Medexes and trained Medical Orderlies (Staff Members) also played an important role in ensuring that adequate medical care was provided to prisoners. There was no major outbreak of any epidemic.

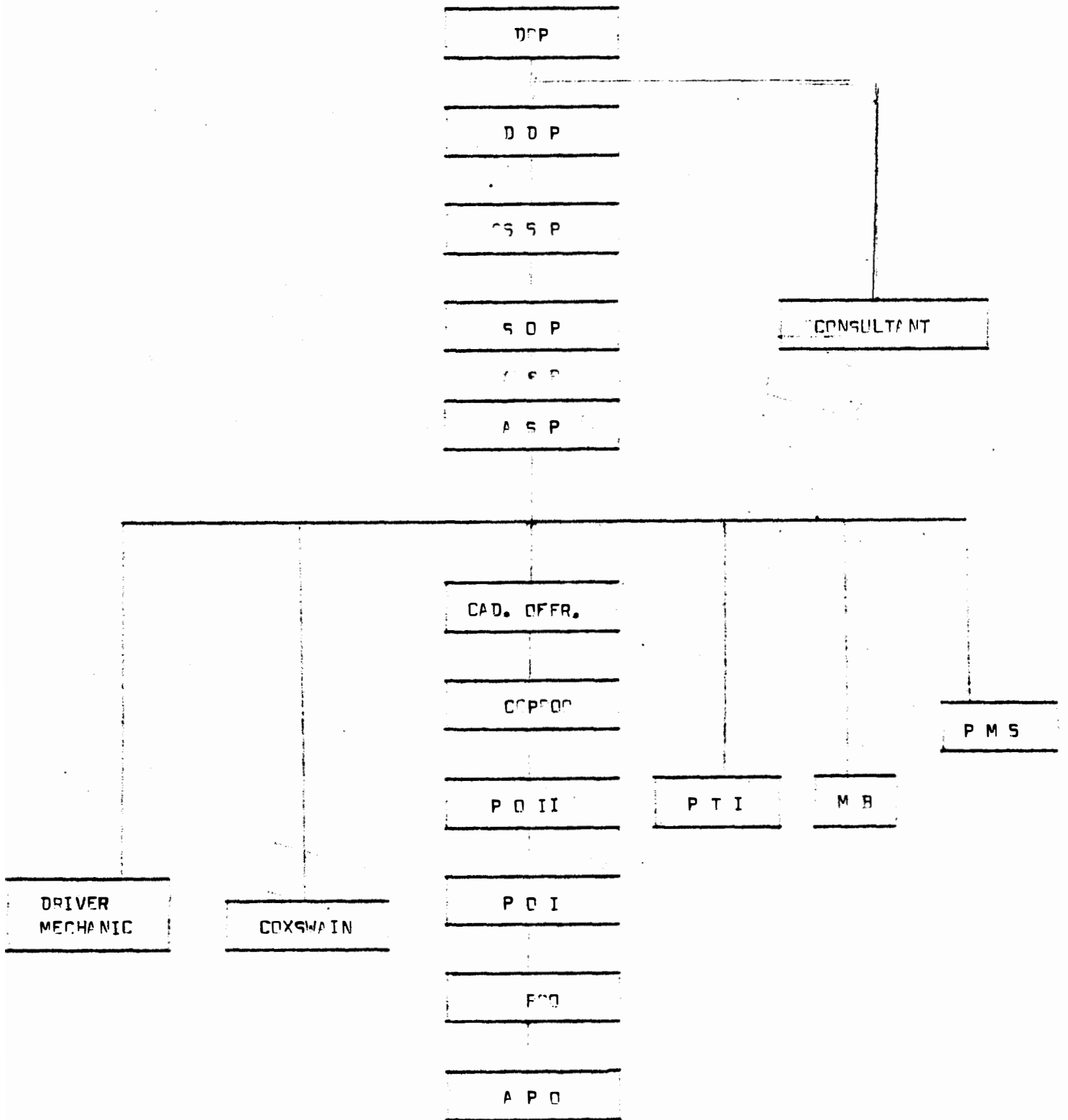
Thirteen (13) prisoners died in 1993. However only seven (7) deaths were recorded in 1994.

The causes of death were:-

Acute Circulation H.I.V	01
Carcinoma of the intestines	01
Abscess of lung, Pleurisy and Pneumonia	02
Pulmonary Haemorrhage and Shock	01
Severe Hematemesis	01
Shock (shot) and Haemorrhage	01
	<hr/>
	07
	<hr/>

ORGANISATION CHART - GUYANA PRISON SERVICE

APPENDIX "A"



APPENDIX "A" (Cont'd)

LEGEND

D.P	-	DIRECTOR OF PRISONS
D.D.P	-	DEPUTY DIRECTOR OF PRISONS
S.S.P	-	SENIOR SUPERINTENDENT OF PRISONS
S.O.P	-	SUPERINTENDENT OF PRISONS
CONSULTANT	-	PRISON CONSULTANT
A.S.P	-	ASSISTANT SUPERINTENDENT OF PRISONS
CAD. OFFR.	-	CADET OFFICER
C.P.O	-	CHIEF PRISON OFFICER
P.M.S	-	PLANT MAINTENANCE SUPERVISOR
P.O II	-	PRINCIPAL PRISON OFFICER II
P.T.I	-	PRISON TRADE INSTRUCTOR
M.B	-	MASTER BAKER
P.O I	-	PRINCIPAL PRISON OFFICER I
P.O	-	PRISON OFFICER
A.P.O	-	ASSISTANT PRISON OFFICER

APPENDIX "B"

Establishment and Strength at 1994-12-31

Position/Rank	Authorized Establishment	Actual Strength	Deficit
Director of Prisons	01	01	--
Deputy Director of Prisons	01	01	--
Senior Superintendent of Prisons	04	03	01
Superintendent of Prisons	05	05	--
Prison Consultant	01	01	--
Assistant Superintendent of Prisons	10	06	04
Cadet Officer	03	--	03
Chief Prison Officer	21	17	04
Plant Maintenance Supervisor	01	01	--
Principal Prison Officer II	36	28	08
Prison Trade Instructor	29	20	09
Master Baker	01	--	01
Principal Prison Officer I	47	21	26
Launch Coxswain	01	--	01
Driver Mechanic	01	--	01
Prison Officer	92	46	46
Assistant Prison Officer	196	160	36
Total	450	310	140

APPENDIX "C" (Staff Training)

Training Courses/Seminars attended by Prison Officers during 1994:-

LOCAL

Internal

Agriculture Seminar	12
Basic Accounting	15
Basic Recruit Training	27
Getéke&pers; Course	10
Junior Supervisors	12
Proficiency Training Part 'B'	14
Reception Officers	19
Recruit Orientation	08
Senior Supervisors	20
Trade Instructors Seminar	07
	<hr/>
	144
	<hr/>

External

Basic Certificate in Accounting	01
Credit Management	02
Credit Union Accounting Part '2'	01
Credit Union Excellence	02
Cuna Insurance	02
Degree in Public Administration	01

APPENDIX "C" Cont'd

Degree in Sociology	01
Diploma in Public Management	01
Disciplinary Procedures Seminar	02
English Course for Officers and Inspectors	02
English Language and Communication for the Office	02
Fire Prevention Seminar	02
Foundation Certificate in Accounting	01
Functioning as an Executive Secretary	01
Home Management and Catering	02
Implementing a Management Information System	01
Interpersonal Relations and Staff Conflict	01
Introduction to Social Work	02
Junior All Arms Course	02
Management Development	01
Professional Secretarial Practice	02
Programme for Personal Assistant Secretaries	03
Project Implementation and Management	01
Records Management	03
Strategic Planning	02
Supervision	02
Supervising Accounts Department	01
Understanding Credit Union Financial Statement	02
Total	190

APPENDIX "D"
Escapes and Recapture

Place of Escape	G/Town	Mazaruni	Timehri	East/Coast	N/A		TOTAL	
					M	F	M	F
Within the Prison	02	07	02	02	03	--	16	--
Hospital	01	--	--	--	--	01	01	01
Work parties	08	--	02	02	06	--	18	--
Total	11	07	04	04	09	01	35	01

APPENDIX "D" Cont'd

At Large on 94-01-01	68	13	08	29	15	--	133	--
Escaped During 1994	11	07	04	04	09	01	35	01
Number Recaptured	14	07	02	06	07	--	36	--
Number Discharged								
Warrant Expired	--	--	--	01	01	--	02	--
Died while at large	01	--	--	--	--	--	01	--
At Large on 94-12-31	64	13	10	26	16	01	129	01

APPENDIX "E"

PRISON POPULATION ON 94-01-01 and 94-12-31

Date	G/Town	Mazaruni	Timehri	East/Coast	N/A		TOTAL	
					M	F	M	F
94-01-01	788	203	43	90	142	46	1266	46
94-12-31	851	218	62	109	163	37	1403	37

APPENDIX "F"

Breakdown of Daily Average Population - 1994

Category	G/Town	Mazaruni	Timehri	East/Coast	N/A		TOTAL	
					M	F	M	F
Remands	303	--	--	28	61	04	392	04
Appellants	57	16	--	02	02	02	77	02
Convicted	513	202	62	78	100	31	955	31
Total	873	218	62	108	163	37	1424	37

APPENDIX "G"

Comparative Table of Daily Average Population Over Last (5) years

Year	Male	Female	Total
1990	1509	85	1594
1991	1485	61	1546
1992	1218	51	1269
1993	1286	46	1332
1994	1424	37	1461

APPENDIX "H"

Admission From the Courts

Category	Georgetown	East/Coast	N/A		TOTAL	
			M	F	M	F
Remands/awaiting trial	2060	287	278	41	2625	41
Convicted	986	61	151	46	1198	46
Total	3046	348	429	87	3823	87

APPENDIX "I"

Classification of Convicted Prisoners Received from the Courts

Category	Georgetown	East/Coast	N/A		Total		Percentages	
			M	F	M	F	M	F
1st Offenders	545	44	82	40	671	48	56.01	86.96
2nd Offenders	208	08	23	01	239	01	19.95	2.17
3rd Offenders	79	02	11	02	92	02	7.68	4.35
Recidivists	154	07	35	03	196	03	16.36	6.52
Total	986	61	151	46	1198	46	100.00	100.00

APPENDIX "J"

Distribution of Sentences Ordered

Range	G/Town	East/Coast	N/A		Total		Percentages	
			M	F	M	F	M	F
6 mths and under	422	45	83	15	550	15	45.91	32.60
Over 6 mths to 12 mths	160	13	38	09	211	09	17.61	19.57
Over 12 mths to 18 mths	79	01	03	--	83	--	6.93	--
Over 18 mths to 24 mths	64	02	11	04	77	04	6.43	8.70
Over 24 mths to 30 mths	45	--	--	--	45	--	3.76	--
Over 30 mths to 36 mths	85	--	11	10	96	10	8.01	21.74
Over 36 mths to 42 mths	66	--	--	01	66	01	5.51	2.17
Over 42 mths to 48 mths	18	--	02	04	20	04	1.67	8.70
Over 48 mths	13	--	01	02	44	02	3.67	4.35
Condemned	04	--	02	01	06	01	0.50	2.17
Total	986	61	151	46	1198	46	100.00	100.00

APPENDIX "K"

Comparative Figures of Numbers of Prisoners who paid fines
After imprisonment to effect their Release

Location/Prison	1990	1991	1992	1993	1994
Georgetown	18	04	11	16	29
New Amsterdam	01	03	02	03	03
East Coast	03	--	--	--	01
Total	22	07	13	19	33

APPENDIX "L"

Comparative Figures of Convicted Prisoners
Received over the Past five (5) years

Category	1990				1991				1992				1993				1994			
	M	%	F	%	M	%	F	%	M	%	F	%	M	%	F	%	M	%	F	%
1st Offence	499	54.06	34	89.47	432	51.80	19	82.60	421	56.28	28	77.77	560	53.79	27	87.10	671	56.01	40	86.96
One Previous Offence	138	14.25	04	10.53	154	18.47	02	8.70	126	16.84	03	8.33	232	22.29	02	6.45	239	19.95	01	2.17
Two Previous Offence	67	7.26	--	--	62	7.43	01	4.35	42	5.63	--	0.02	74	7.11	02	6.45	92	7.68	02	4.35
Recidivists	219	23.73	--	--	186	22.30	01	4.35	159	21.25	05	13.88	175	16.81	--	--	196	16.36	03	6.52
TOTAL	923	100.00	38	100.00	834	100.00	23	100.00	748	100.00	36	100.00	1041	100.00	31	100.00	1198	100.00	46	100.00

APPENDIX "M"

Offence for which Prisoners were Admitted to Prison - 1994

OFFENCES	GEORGETOWN				EAST COAST				NEW AMSTERDAM						TOTAL					
	Option of a Fine		Peremptory Imprisonment		Option of a Fine		Peremptory Imprisonment		Option of a Fine		Peremptory Imprisonment		Option of a Fine		Peremptory Imprisonment					
	M	YP	M	YP	M	YP	M	YP	M	F	YP	M	F	YP	M	F	YP			
Offence against the person	42	01	250	12	-	-	18	01	02	02	-	75	19	02	44	02	01	343	19	15
Offence against the person with violence	-	-	182	03	-	-	06	-	-	-	-	41	07	01	-	-	-	229	07	04
Offence against the person without violence	-	-	128	02	-	-	02	-	-	-	-	12	02	-	-	-	-	143	02	02
Murder	-	-	06	-	-	-	-	-	-	-	-	-	-	-	-	-	-	06	-	-
Sex Offence	-	-	04	04	-	-	-	-	01	-	-	-	-	-	01	-	-	04	-	04
Manslaughter	-	-	13	-	-	-	-	-	-	-	-	-	-	-	-	-	-	13	-	-
Maintenance & Aff. Arrears	-	-	-	-	-	-	-	8	02	-	-	-	-	-	02	-	-	-	-	-
of Narcotic Act	03	-	86	-	-	-	01	-	-	-	-	12	13	-	03	-	-	99	13	-
Miscellaneous	03	02	245	08	-	-	35	-	-	-	-	28	07	-	03	-	02	308	07	08
Praedial Larceny	-	-	21	-	-	-	01	-	-	-	-	-	-	-	-	-	-	22	-	-
Breach of Traffic Regulations	-	-	01	-	-	-	01	-	01	-	-	-	-	-	01	-	-	02	-	-
Total	48	03	937	29	-	-	64	01	06	02	-	168	48	03	54	02	03	1169	48	33

APPENDIX "A"

APPELLANTS

(1)

	<u>MALE</u>	<u>FEMALE</u>	<u>TOTAL</u>
Number in Custody on 94-01-01	103	07	110
Admitted During 1994	64	07	71
	<u>167</u>	<u>14</u>	<u>181</u>
Number of Appeals Allowed	12	02	14
Number of Appeals Dismissed	07	--	07
Number of Appeals Abandoned	03	01	04
Number of Retrials Ordered	02	01	03
Number of Appellants Admitted to Bail	23	01	24
Number of Instances Sentences Expired with Appeals unheard	17	02	19
	<u>64</u>	<u>07</u>	<u>71</u>
Number in custody on 94-12-31	103	07	110
Daily Average in Custody	77	02	79

"A" II

Remands and Awaiting Trials

	<u>MALES</u>	<u>FEMALES</u>	<u>TOTAL</u>
In custody on 94-01-01	320	09	329
Admitted during 1994	2625	41	2666
Total	2945	50	2995
Cases disposed of by the Courts	2553	45	2598
In custody on 94-12-31	467	03	470
Daily Average in Custody	392	04	396

APPENDIX "Q"

Type of work and daily average of Prisoners Employed

Nature of Work	G/Town	Maz.	Timehri	East/Coast	N/A		TOTAL	
					M	F	M	F
Printers	06	-	-	-	-	-	06	-
Plumbers/Tinsmith	03	01	-	-	-	-	04	-
Tailors/Seamstress	04	03	02	02	01	-	12	-
Shoemakers	01	-	01	-	01	-	03	-
Cooks	25	13	03	04	05	04	50	04
Carpenters/Mason	14	08	02	05	04	-	33	-
Agri Labourers	02	06	02	20	07	05	37	05
Labourers	24	17	29	08	-	-	78	-
Stockfarms	-	18	01	-	-	-	19	-
Barbers	02	01	02	01	01	-	07	-
Cleaners	09	10	05	06	08	08	38	08
Electricians	01	02	-	-	02	-	05	-
Welders/Mechanics	05	02	-	-	-	-	07	-
Wood Cutters	02	06	-	01	04	-	13	-
Washers (Male)	04	-	-	01	-	-	05	-
Piquery	-	15	-	-	-	-	15	-
Total	102	102	47	48	33	17	332	17

APPENDIX "P"

Medical Report for 1994 as Compared with 1993

	<u>1993</u>	<u>1994</u>
In Public Hospital on 94-01-01	03	04
In Prison Infirmaries on 94-01-01	24	27
Number of times prisoners reported ill during the year	53,341	59,149
Number admitted to Prison infirmaries	257	298
Number admitted to Public Hospitals	43	40
Number admitted to Rest Hospital	--	--
Number admitted to Mental Hospital	--	--
Number of times Prisoners treated at Out-Patient Clinics, Public Hospital	1,866	1,118
Number who received spectacles	--	--
Number of Deaths	13	07
Daily average in Public Hospital	03	05

Illness

No. of Time Prisoners were Treated at Prison Infirmaries.

Abcess	575	81
Acute Diarrhoea	1,427	4,524
Acute Gastritis	1,219	189
Acute Bronchitis	635	506
Accidental Injuries	620	341
Aids Virus	52	10
Anaemia	5,292	625

APPENDIX "P" CONT'D

	<u>1993</u>	<u>1994</u>
Asthma	1,087	160
Anxiety Neurosis	01	-
Arthritis	1,208	1,390
Abdominal Pains	391	1,992
Appendicitis	02	03
AC. Arthritis	1,205	134
Allergies	94	88
Amoebic Colitis	04	-
Anorexia	-	65
Abrasion	-	27
Burns	-	10
Back Pain	2,264	4,447
Blurred Vision	-	25
Common Cold	6,492	2,620
Conjunctivitis	182	68
Chicken Pox	-	80
Constipation	802	591
Chronic Ulcer	13	-
Chest Pain	-	03
Cyst	1	03
Conjunctival Hemorrhage	-	10
Condyroma	-	07
Diabetes	149	25
Decubitus Ulcer	07	17
Dyspepsia	1,293	289
Dental Cavities	1,003	2,688
Dermatitis	4,931	308
Drug Induced	-	22
Epilepsy	07	93
Epistaxis	07	07
Eczema	-	200
Fungal Infection	1,590	1,372
Fever	02	03
Filariasis	21	04
Flatulence	-	02
Foreign Body	-	94
Fracture	-	14
Gonorrhoea	239	135
Gingivitis	34	03
Gastroenteritis	65	04
Glaucoma	-	09
Haemorrhoids	424	354
Headache	3,193	4,446
Helminthiasis	20	19
Hernia	-	277
Haematuria	-	39
Hypertension	626	360
Hepatitis	14	154
Hydrocele	355	860
Influenza	861	470
Insomnia	2,418	1,456
Impacted Wax	-	22

APPENDIX "P" CONT'D

	<u>1993</u>	<u>1994</u>
Itches	1,435	272
Infective Hepatitis	-	03
Inguinal Hernia	122	-
Jaundice	22	24
Lsoriasis	-	02
Leucorrhoea	-	177
Laryngitis	-	206
Malaria	80	45
Neil Stick	12	-
Nervous Psychiatric	990	22
Neuritis	19	02
Neurosis	463	-
Neuralgia	-	04
Oedema	225	19
Orchitis	159	144
Otitis Media	216	61
Peptic Ulcer	153	24
Penile Ulcer	317	150
Pneumonia	23	-
Pterygium	131	11
Perpherial Neuritis	-	02
Pharyngitis	-	64
Penile Discharge	-	36
Paraphimosis	-	10
Pyrexia U.O	807	28
Respiratory Infection	15	
Septic Sores	19	08
Scabies	694	2,118
Skin Infection	296	
Syphillis	80	73
Stomatitis	-	26
Soriasis	-	02
Simisitis	-	125
Tonsilitis	248	41
Tuberculosis	101	09
Treuma	-	56
Urethra Discharge	244	93
Urethritis	175	159
Vomiting	-	07
Weakness	116	2,560
Wounds	119	80
Worms	-	15

APPENDIX "P" II.

DEATH OF PRISONERS

Died while in Hospital	03
Died while at large	01
Died while in Prison	03
	<hr/>
	07
	<hr/>

APPENDIX "Q"

Discipline - Staff

Offence	1990	1991	1992	1993	1994
Absent from Duty	76	76	169	118	86
Asleep on Duty	02	06	06	10	12
Been Insubordinate	01	--	--	--	01
Late for Duty	19	49	47	30	24
Disobedience of Lawful order	07	03	18	15	30
Neglect of Duty	29	30	39	37	22
Used Personal Violence	--	--	--	--	01
Loss by neglect or wilful damage to property	--	02	--	05	03
Used unnecessary violence	01	01	02	01	01
Prejudicial Conduct	46	53	63	38	29
Abusive or threatening Language	--	--	01	--	--
Breach of Prison rules or standing orders	19	25	23	03	35
Presented self dirty or untidy	03	01	--	01	18
Misconduct	--	--	01	05	--
Undue Familiarity	03	--	--	--	01
Total	206	246	369	263	263

"Q" II

Discipline - Prisoners

Offences	Males	Females	TOTAL	
			M	F
Prejudicial Conduct	261	11	261	11
Escape or Attempt to Escape	27	--	27	--
Make groundless or wilful Accusation against a member of staff	04	--	04	--
Total	292	11	292	11

"Q" III

Corporal Punishment

Number of Prisoners Whipped 01
Number of Prisoners Flogged 02
03

APPENDIX "R"

The Quantity of Farms Produce for 1994

as compared with 1993

Produce	1993 Quantity	Value	1994 Quantity	Value
Fish	-	-	65 lbs	3,250.00
Green Vegetables	81,806 lbs	1,638,120.00	115,872 lbs	2,896,800.00
Ground Vegetables	4,183 "	62,745.00	11,176 "	279,400.00
Fruits	4,316 "	107,900.00	9,227 "	276,810.00
Pork	12,582 "	629,100.00	14,144 "	848,640.00
Beef	5,093 "	254,650.00	5,539 "	332,340.00
Mutton	320 "	32,000.00	100 "	4,800.00
Milk	105,226 pints	1,578,390.00	90,990 pints	1,364,850.00
Coconuts	2,432 only	24,320.00	5,557 only	55,570.00
Fire Wood	600 tons	210,000.00	583 tons	204,050.00
Charcoal	152 bags	15,200.00	1,171 bags	117,100.00
Pigs (live)	02 only	1,440.00	16 only	80,000.00
Cattle (live)	04 only	34,000.00	- -	- -
Lumber	- -	- -	1,246 bm	62,300.00
Total		4,587,865.00		6,525,910.00

"R" II

The Value of Ground Vegetables Produced during 1994 as
Compared with 1993

Produce (Ground Vegetables)	1993			1994		
	Quantity (lbs)	Unit Price	Value	Quantity (lbs)	Unit Price	Value
Cassava	57 lbs	15 00	855 00	571 lbs	25 00 per lb	14,275 00
Eddoes	30 lbs	15 00	450 00	414 lbs	25 00 per lb	10,350 00
Sweet Potatoes	4,096 lbs	15 00	61,440 00	10,191 lbs	25 00 per lb	254,775 00
	4,183 lbs		62,745 00	11,176 lbs		279,400 00

"R" III

Value of Fruits Produced for the Year 1994
as Compared with 1993

Produce	1993 Quantity	Unit Price	Value	1994 Quantity	Unit Price	Value
Grape Fruit	111 lbs	25 00 per lb	2,775.00	--	--	--
Carambola	- -	- -	--	50 lbs	30 00 per lb	1,500.00
Tangerine	75 lbs	25 00 per lb	1,875.00	--	--	--
Orange	315 lbs	25 00 " "	7,875.00	--	--	--
Lemons	275 "	25 00 " "	6,875.00	241 lbs	30 00 per lb	7,230.00
Pears	97 "	25 00 " "	2,425.00	172 "	30 00 " "	5,160.00
Guava	696 "	25 00 " "	17,400.00	1,608 "	30 00 " "	48,240.00
Dunks	- -	- -	--	189 "	30 00 " "	5,670.00
Banane	1,376 lbs	25 00 per lb	34,400.00	1,260 lbs	30 00 " "	37,800.00
Cashew	294 "	25 00 " "	7,350.00	1,314 "	30 00 " "	39,420.00
Mangoes	188 "	25 00 " "	4,700.00	1,660 "	30 00 " "	49,800.00
Water Melon	- -	- -	--	247 "	30 00 " "	7,410.00
Tamerind	- -	- -	--	443 "	30 00 " "	13,290.00
Bilimbi	370 lbs	25 00 per lb	9,250.00	333 "	30 00 " "	9,990.00
Golden Apple	351 "	25 00 " "	8,775.00	729 "	30 00 " "	21,870.00
Genip	80 "	25 00 " "	2,000.00	458 "	30 00 " "	13,740.00
Passion Fruit	- -	- -	--	161 "	30 00 " "	4,830.00
Limes	50 lbs	25 00 per lb	1,250.00	115 "	30 00 " "	3,450.00
Sorrel	38 "	25 00 per lb	950.00	247 "	30 00 " "	7,410.00
Total	4,316 lbs		107,900.00	9,227 lbs		276,810.00

APPENDIX "5"

Quantity of Produce used for Feeding Prisoners and
its Value during 1994 as Compared with 1993

Produce	1993 Quantity	Unit Price	Value	1994 Quantity	Unit Price	Value
Green Vegetables	81,906 lbs	20 00 per lb	1,638,120.00	115,872 lbs	20 00 per lb	2,896,800.00
Ground Vegetables	4,039 "	15 00 " "	60,585.00	11,176 "	25 00 " "	279,400.00
Pork	1,736 "	50 00 " "	86,800.00	4,833 "	60 00 " "	289,980.00
Pork	5,006 "	40 00 " "	200,240.00	- -	- -	- -
Beef	2,900 "	50 00 " "	145,000.00	2,022 lbs	60 00 per lb	121,320.00
Mutton	126 "	100 00 " "	12,600.00	100 "	150 00 " "	15,000.00
Milk	38,736 pint	15 00 " pint	581,040.00	35,537 pints	15 00 " pint	533,055.00
Coconuts	2,432 only	10 00 each	24,320.00	5,557 only	10 00 each	55,570.00
Charcoal	152 bags	100 00 per bag	15,200.00	2,100 lbs	4 00 per lb	8,400.00
Fruits	4,316 lbs	25 00 " "	107,900.00	9,227 "	30 00 " "	276,810.00
Fish	- -	- -	- -	65 "	50 00 " "	3,250.00
Fire Wood	600 tons	350 00 ton	210,000.00	583 tons	350 00 " ton	204,050.00
Total			3,091,805.00			4,683,635.00

APPENDIX "T"

Livestock Returns (Cattle) as at 94-12-31

<u>Classification for Animals</u>	<u>Return as at 94-01-01</u>	<u>Return as at 94-12-31</u>
Service Bulls	09 including 02 missing	09 including 02 missing
Milch Cows	61 " 02 "	56 " 01 "
Heifers	15 " 02 "	11 " 01 "
Female Calves	37 - - -	45 - - -
Male Calves	41 including 01 missing	35 including 01 missing
Bullocks	02 - - -	- - - -
Total	165 including 07 missing	156 including 05 missing

<u>BIRTHS</u>	<u>DEATHS</u>	<u>SLAUGHTERED</u>	<u>SOLD</u>	<u>BALANCE AS</u>
30	04	35	Nil	<u>AT 94-12-31</u>
				156

"T" (II)

Livestock Return (Sheep) as at 94-12-31

Classification of Animals	Return as at 94-01-10	Return as at 94-12-31
Service Ram	02	02
Ewes	10	10
Ewes Lambs	12	17
Ram Lambs	11	13 Including 1 Missing
In Lamb Ewes	05	04
Total	40	46 Including 1 missing

Births

BIRTHS

17

DEATHS

6

SLAUGHTERED

05

SOLD

Nil

"T" (LII)

Livestock Return 1994 (Swine)

Classification of Animals	Return as at 94-01-01	Return as at 94-12-31
Service Boars	05	07
Selected Boars	--	--
Dry Sows	07	11
Lactating Sow	05	03
In Pig Sows	07	11
Store Fatteners	84	68
Selected Gilts	03	12
In Gilts	02	02
Wenkers	107 Including 7 missing	66
Suckling pigs	23	18
Total	223 Including 7 missing	198 Including 7 missing

<u>BIRTHS</u>	<u>DEATHS</u>	<u>SLAUGHTERED</u>	<u>SOLD</u>	<u>MISSING</u>	<u>PURCHASED</u>
111	40	126	--	07	10

APPENDIX "U"

Value of Produce for the year 1994 as Compared with 1993

Produce	1994		Unit Price	Value	1993		Unit Price	Value
	Quantity	lbs			Quantity	lbs		
Pumpkin	16,384	lbs	25 00 per lb	409,600.00	10,949	lbs	20 00 per lb	218,980.00
Squash	10,626	"	25 00 " "	265,650.00	10,599	"	20 00 " "	211,980.00
Boulangers	5,239	"	25 00 " "	130,975.00	4,714	"	20 00 " "	94,280.00
Ochrees	4,782	"	25 00 " "	119,550.00	436	"	20 00 " "	8,720.00
Papaws	2,415	"	25 00 " "	60,375.00	2,266	"	20 00 " "	45,320.00
Cucumbers	10,088	"	25 00 " "	252,200.00	755	"	20 00 " "	15,100.00
Bread Nuts	199	"	25 00 " "	4,975.00	327	"	20 00 " "	6,540.00
Bread Fruits	1,423	"	25 00 " "	35,575.00	1,656	"	20 00 " "	33,120.00
Minica '4'	135	"	50 00 " "	6,750.00	143	"	40 00 " "	5,720.00
Bora	7,502	"	25 00 " "	187,550.00	1,616	"	20 00 " "	32,320.00
Pigeon Peas	657	"	40 00 " "	26,280.00	449	"	30 00 " "	13,470.00
Pak Choy	6,485	"	25 00 " "	162,125.00	3,396	"	20 00 " "	67,920.00
Mustard	1,873	"	25 00 " "	46,825.00	541	"	20 00 " "	10,820.00
Poi Salaloo	44,164	"	25 00 " "	1,104,100.00	40,387	"	20 00 " "	807,740.00
Peppers	1,353	"	25 00 " "	33,825.00	1,439	"	25 00 " "	35,975.00
Seasoning	1,650	"	25 00 " "	41,250.00	1,103	"	25 00 " "	27,575.00
Anatto	340	"	25 00 " "	8,500.00	313	"	20 00 " "	6,260.00
Tomatoes	514	"	25 00 " "	12,850.00	697	"	25 00 " "	17,425.00
Seime	43	"	25 00 " "	1,075.00	120	"	25 00 " "	3,000.00
Total	115,872	lbs		2,910,030.00	81,906	lbs		1,662,265.00

APPENDIX "V"

The Quantity of Farm Produce Sold during 1994 as Compared
with 1993

Produce	Quantity	Unit Price	1993 Value	Quantity	Unit Price	1994 Value
Pork	2,280 lbs	50 00	114,000 00	9,311 lbs	60.00 per lb	558,660.00
Pork	3,506 lbs	40 00	140,240 00	--	--	--
Milk	15,479 pints	15 00	232,185 00	7,666 pints	15.00 per pint	114,990.00
Beef	2,193 lbs	50 00	109,650 00	3,517 lbs	60.00 per lb	211,020.00
Live Pige	02 only	--	1,440 00	Nil	Nil	--
Live Cattle	04 only	--	34,000 00	Nil	Nil	--
Mutton	120 lbs	100 00	12,000 00	1,171 lbs	100.00 per lbs	117,100.00
Charcoal	--	--	--	1,171 bags	100.00 per bags	117,100.00
Total			643,515 00			1,001,770.00

APPENDIX "W"

Capital Expenditure for the year ending 1994-12-31

PROJECT IDENTIFIED	VOTED PROVISION	ACCUMULATED RELEASES	ACTUAL EXPENDITURE
12,001 Buildings	25,000,000.00	25,000,000.00	25,000,000.00
Sibley Hall Mazaruni Prison	8,800,000.00	8,800,000.00	8,764,000.00
Renovation to Stellino at Mazaruni	3,000,000.00	3,000,000.00	3,008,000.00
Renovation to Stores at Mazaruni	1,330,000.00	1,330,000.00	1,038,000.00
Rehabilitation of Pallerina Prison	9,121,000.00	9,121,000.00	3,807,510.00
Renovation of Female Dormitory New Amsterdam	1,600,000.00	1,600,000.00	1,600,000.00
Extension of Female Kitchen New Amsterdam	932,000.00	932,000.00	932,000.00
Renovation of Roof Male Kitchen New Amsterdam	170,000.00	170,000.00	170,000.00
Renovation of Roof of Old Kitchen Georgetown Prison	47,000.00	--	--
24,005 Land and Water Transport	5,000,000.00	5,000,000.00	4,307,000.00
26,005 Agri Equipment	500,000.00	500,000.00	500,000.00
Total	55,500,000.00	55,453,000.00	49,126,510.00

APPENDIX "X"

24-Ministry of Home Affairs - Prisons
Current Expenditure for the year ended 94-12-31

G\$'000

Sub-Head	Description	Revised Estimates	Budget 1994	Actual Exp 1994	Actual Exp. 1993
	Total Employment Cost	47,868	47,681	50,016	38,078
	Wages and Salaries	33,927	33,740	36,067	25,166
101-000	Administrative	3,580	3,580	3,647	2,243
103-000	Other Technical and Craft Skills	12,511	12,500	13,672	10,687
104-000	Clerical and Office support	6,638	7,075	6,640	4,128
105-000	Semi-Skilled and Operatives Unskilled	11,198	10,585	12,108	8,108
	Overhead Expenses	13,941	13,941	13,949	12,912
201-000	Other Director Labour Cost	221	78	230	340
203-000	Benefits & Allowances	11,399	11,542	11,340	10,947
204-000	National Insurance	2,321	2,321	2,379	1,625
	Total Other Charges	75,133	74,796	74,946	39,445
302-000	Materials, Equipment and Supplies	16,972	19,330	16,890	4,437
001	Drugs and Medical Supplies	19	19	20	3
002	Field Materials and Supplies	15,873	18,231	15,643	3,454

APPENDIX "X" (Cont'd)

Current Expenditure for the year 1994-12-31

003	Office Materials and Supplies	631	631	822	800
004	Print and Non-Print Materials	449	499	405	180
303-000	Fuel and Lubricants	4,912	4,923	4,904	2,010
304-000	Rental and Maintenance of Buildings	3,640	2,548	3,639	912
304-002	Maintenance of Buildings	3,640	2,548	3,639	912
305-005	Maintenance of Infrastructure	692	--	678	9
306-000	Electricity Charges	4,359	3,485	4,359	700
307-000	Transport, Travel and Postage	3,735	3,843	3,748	1,436
308-000	Telephone Charges	190	155	198	
001	Local Travel & Subsistence	978	978	983	747
003	Postage, Telex and Cablegrams	6	6	2	1
004-000	Vehicle, Spares and Services	2,751	2,859	2,763	688
309-000	Other Services Purchased	118	118	78	43
314-000	Other	40,515	40,394	40,454	29,900
Grand Total		66,616	62,987	66,672	38,338

