

SUGAR INDUSTRY LABOUR WELFARE
FUND COMMITTEE

ANNUAL REPORT 1995

HIGHLIGHTS OF THE REPORT

1. New loan disbursement procedures were implemented so as to expedite the utilization of funds allocated for such purposes.
2. 119 new house lots were developed at Canefield, East Canje, Berbice at a cost of \$32,002,689.00. 105 of these house lots were allocated to Sugar Workers.
3. Work was in progress at Enterprise, East Coast Demerara to develop 112 new house lots.
4. Major rehabilitation works were carried out at Cornelia Ida Community Centre and Tuschen Cricket Ground totalling \$3,542,328.00.
5. Pipelines and fittings totalling \$5,292,945.00 were procured which will be installed in newly developed housing areas.

Replacement of damaged pipelines in existing housing areas was in progress.
6. Water Supply facilities totalling \$474,840.00 were extended to residents at Long Pond, Wales, West Bank Demerara and Albion, Corentyne, Berbice.
7. 19 Water Pump Stations were rehabilitated at a cost of \$7,327,389.00. Work was progressing on the remaining two (2) Water Pump Stations.

/2...

2.

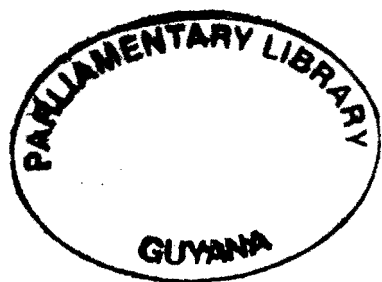
1. PERSONNEL

1.1 Attached please refer to Schedule I for Organisation Chart.

1.2 During the year, the Personnel of the Committee were as follows:-

- | | | |
|----|--------------------------------|--|
| 1. | Mr. M.A. Akeel, Chairman | Chief Labour Officer,
Ministry of Labour,
Human Services &
Social Security. |
| 2. | Mr. R..Edinboro, Member | Secretary
Central Housing &
Planning Authority. |
| 3. | Mr. E. Hanoman, Member | |
| 4. | Mr. W. Fung, Member | Representatives
of the Guyana
Sugar Corporation
Limited. |
| 5. | Mr. I.A. McDonald, A.A. Member | |
| 6. | Mr. C. Duncan, Member | |
| 7. | Mr. J. Persaud, Member | Representatives
of the Trade
Unions. |
| 8. | Mr. K. Takechandra, Member | |
| 9. | Mr. M. S. Ally, Member | Representative
National Cane
Farming Committee. |

/3...



- 1.3 Positions vacant as at December 31, 1995 were as follows:-

<u>CATEGORY</u>	<u>AMOUNT</u>
Superintendent of Water Supply Operations	1
Conveyancing Officer	1
Senior Clerk	<u>1</u>
	3
	===

- 1.4 The Committee signed and implemented a two-year Collective Labour Agreement for Workers who are represented by the Guyana Agricultural and General Workers' Union (G.A.W.U.). This Agreement pertained to improvements in emoluments and conditions of employment.

- 1.5 An in-house Training Programme was implemented in June 1995 and a total of four (4) sessions were conducted in the latter part of the year. The Water Services and Conveyancing Sections were the beneficiaries of these programmes.

The Administrative Assistant participated in a local Training Programme conducted by Professional Education Programme.

- 1.6 One Bursary was awarded in 1995 to an employee's child who was successful at the 1995 Secondary School Entrance Examination.

At the end of the reporting period, accumulated Bursaries that were awarded amounted to eighteen (18).

In addition, during 1995, the Committee approve an increase of Bursary from three thousand dollars (\$3,000.00) to five thousand dollars (\$5,000.00) per child.

2. FINANCE

- 2.1 Attached please refer to Schedule II for Actual Expenditure, for the period 1990 to 1995.
- 2.2 Attached please refer to Schedule III for Income Collected for the period 1990 to 1995.
- 2.3 Over the last five (5) years, there were two (2) increases in Sugar Levy which were paid over to this Committee. These increases were as follows:-

Increase on Levies		Effective date on increase	Percentage increase
FROM \$	TO \$		
12.00	85.50	Feb. 18, 1991	612.5%
85.50	500.00	Jan. 01, 1993	484.79%

- 2.4 The rigid financial regulations set out by the Guyana Sugar Corporation Limited on the various Estates, was one of the major factors that discouraged borrowers from persuing disbursements of loans.

In December 1995, the Committee approved new disbursement procedures whereby borrowers will deal directly with the Committee's Head Office for disbursement of loans.

- 2.5 The records were audited up to December 31, 1974.

Discussions were in progress with the Office of the Auditor General and assurance were given that records for 1975 thereon will be audited in 1996.

/5...

- 2.6 Based on information obtained from the various Sugar Estates the under-mentioned loans were disbursed by these Estates during the period January 1995 to December 1995.

However, none of these Estates claimed re-imbusement for the loans that were disbursed. This was reflected in Schedule II.

LOANS DISBURSED:

<u>CATEGORY</u>	<u>AMOUNT</u>	<u>VALUE</u>
Housing Loans	14	\$ 2,800,000.00
Repair Loans	-	-
Extension Loans	-	-
	<u>14</u>	<u>\$2,800,000.00</u>
	=====	=====

3. DEVELOPMENTAL WORKS - HOUSE LOTS

- 3.1 In 1995 the Committee developed 119 new house lots at Canefield, Canje Berbice at a cost of \$32,002,689.00.

105 of these house lots were allocated to sugar workers in December 1995. Two lots were handed over to GuySuCo for the construction of houses for the Welfare and Community Development Officers.

- 3.2 Works were 85% completed at Enterprise, East Coast Demerara where 112 new house lots were being developed. The unavailability of building materials coupled with bad weather condition delayed this project which was scheduled to be completed on December 15, 1995.

- 3.3 Awarding of a contract for the development of 56 new house lots at Bath, West Coast Berbice was pending at December 1995. This was due to the fact that the Committee had requested to examine various options with respect to costs and type of materials with a view of reducing the developmental costs.

4. REHABILITATION WORKS

- 4.1 During 1995, a total of 19 Pump Station Buildings were rehabilitated at a cost of \$7,327,389.00. Some of these works include: replacement of toilet facilities, repairs to roof, doors, windows, fences, guttering, electrical fittings, repainting of building and provision of guard huts.

At the end of December, works were continuing on the remaining two (2) Pump Station Buildings.

- 4.2 The Committee approved a contract totalling \$3,206,328.00 for the rehabilitation of the Cornelia Ida Community Centre. At the end of December works were 95% completed. However, at the end of the reporting period the Committee was considering the possibility of extending the scope of works to be carried out at the Cornelia Ida Community Centre with a view of completing the entire project.

- 4.3 During the year, the Committee provided fencing materials at a cost of \$336,000.00 to the Tuschen/Uitvlugt Neighbourhood Democratic Council for fencing of the Tuschen Ground. Fencing of the entire ground was completed in 1995.

- 4.4 Minor rehabilitation works at a cost of \$71,000.00, were done at the Committee's Head Office during the year. These works included repairs to the roof and windows.

/7...

5. WATER SUPPLY

- 5.1 Major break-downs of wells/engines during 1995 amounted to 36 occasions as against 48 occasions in 1994.

This was as a result of a maintenance programme which was implemented.

- 5.2 Procurement of spare parts for wells and engines during 1995 was an on going exercise. The unavailability of these parts locally was a major set back in the Water Supply Programme.

- 5.3 Pipelines and fittings totalling \$144,000.00 were provided to residents of Albion Front to extend the supply of potable water to them. Laying of these lines were done by self-help with the supervision of the Committee's Building Inspector.

About 100 residents benefited from this Project.

- 5.4 In addition, the Committee provided pipelines and fittings valued at \$330,840.00 and the erection of four stand pipes, to residents of Long Pond, Wales so as to extend the supply of water to them.

Work was completed in 1995 and about 500 residents benefited from this project.

- 5.5 The Committee procured pipelines and fittings valued at \$5,292,945.00 which were projected to be used in some of the areas that were newly developed by the Committee and also by GuySuCo. At the end of December 1995, designs were being conducted for the laying of these pipelines in Canefield, Enterprise and Cornelia Ida Housing Areas.

- 5.6 During the last quarter in 1995, both wells at Seafield, Leonora collapsed. An amount of \$547,429.00 was expended to rehabilitate these wells but efforts failed due to major defects of both wells.

Discussions were continuing with the Guyana Water Authority for the drilling of a new well in the area.

6. SALE OF HOUSE LOTS

- 6.1 During the year 1995 a total of 272 house lots were sold. A summary of house lots sold during the period 1990 to 1995 is as follows:-

<u>CATEGORY</u>	<u>1990</u>	<u>1991</u>	<u>1992</u>	<u>1993</u>	<u>1994</u>	<u>1995</u>
Sugar Workers	64	66	74	66	84	84
Pensioners	38	53	46	32	37	30
Non-Sugar Workers	72	116	121	143	111	134
Ex-Sugar Workers	46	60	53	42	31	21
Senior Staff	1	1	-	-	-	1
Widows/Widowers of Ex-Sugar Workers	15	21	8	15	16	2
Cane Farmers	-	-	-	-	-	-
Religious Body	-	-	-	-	-	-
Demerara Sugar Terminal	-	-	-	-	-	-
Guyana Distilleries Limited	-	-	-	-	-	-
TOTAL	236	317	302	298	279	272

- 6.2 At the end of December 1995, there were 52 applications pertaining to the sale of house lots which were being processed by the Conveyancing Section.

- 6.3 In an effort to recover a portion of the cost to develop a house lot, the Committee has reviewed its charges as follows:-

<u>YEAR</u>	<u>COST CHARGED PER LOT</u>
1995	\$20,000.00
1996	\$40,000.00
1997	\$60,000.00

/9...

Prior to 1995, the price charged was \$1.00 per lot.

Allottees were required to make payments before taking possession of their lots.

The Union representing the Sugar Workers concurred with the above prices.

7. LOANS

7.1 Sixty-five (65) loans were approved for the year 1995. Below is a summary of loans approved for the period 1990 to 1995.

<u>CATEGORY</u>	<u>AMOUNT</u>					
	<u>1990</u>	<u>1991</u>	<u>1992</u>	<u>1993</u>	<u>1994</u>	<u>1995</u>
New Loans	-	-	-	-	30	40
Repair Loans	-	-	-	-	3	18
Extension Loans	-	-	-	-	-	7

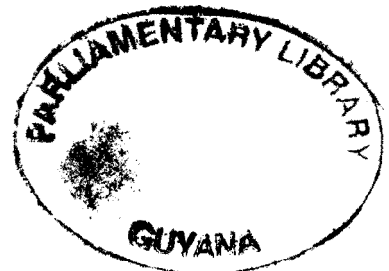
7.2 The maximum amount of money granted as Loan in each category are as follows:-

- a) New Loans - \$200,000.00
- b) Repair Loans - \$ 50,000.00
- c) Extension Loans - \$ 40,000.00

8. CONCLUSION

The programme of the Sugar Industry Labour Welfare Fund Committee is moving ahead with Committee support and monitoring by the Members of the Committee.

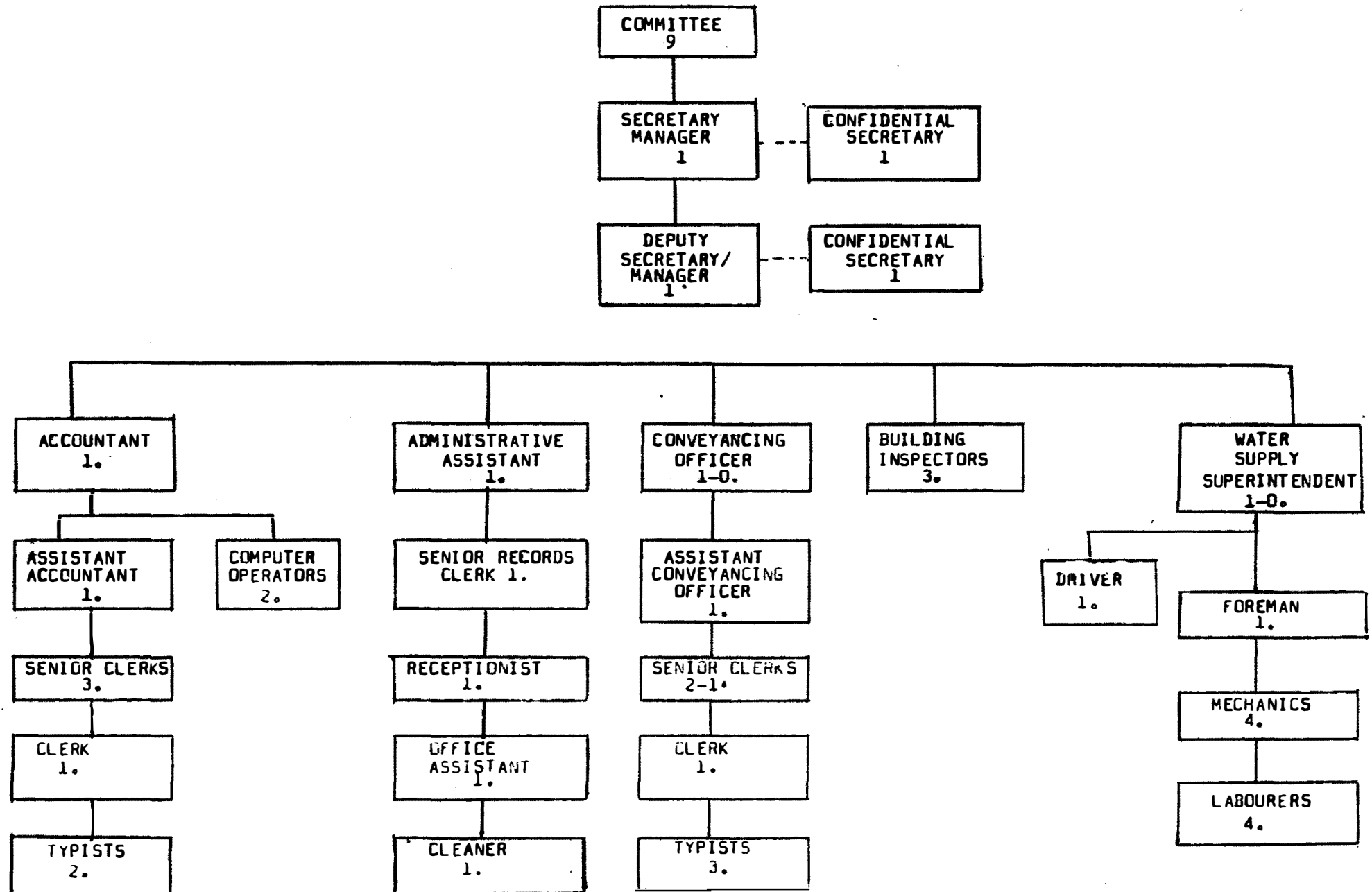
/10...



10. SCHEDULE I

1. PERSONNEL

1.1 ORGANISATION CHART



SCHEDULE IIFINANCE

2.1 The following is a summary of actual Expenditure for the period 1990 to 1995

<u>CATEGORY</u>	<u>1990</u>	<u>1991</u>	<u>1992</u>	<u>1993</u>	<u>1994</u>	<u>1995</u>
	<u>\$</u>	<u>\$</u>	<u>\$</u>	<u>\$</u>	<u>\$</u>	<u>\$</u>
Housing Loans	-	-	-	81,550.00	-	-
Repair Loans	-	-	-	-	-	-
Extension Loans	-	-	-	-	-	-
Development of house lots	-	-	-	-	-	68,153,651.00
Maintenance Works in Housing Areas	26,843.84	-	124,537.96	1,627.91	53,719.00	-
Water Supply	7,304,809.17	14,099,901.99	32,342,857.11	19,129,639.69	47,143,362.00	54,851,499.00
Maintenance and Repairs to Welfare Building	33,478.72	53,180.00	50,680.00	56,842.05	-	12,199,536.00
Procurement of Pipelines and fittings	-	-	-	-	-	5,292,945.00
Purchase of one Truck	-	-	-	-	-	5,054,776.00
Administration and Control	<u>2,651,505.60</u>	<u>4,948,171.73</u>	<u>7,808,568.04</u>	<u>10,271,461.75</u>	<u>12,702,068.00</u>	<u>14,718,681.00</u>
	<u>\$10,016,637.33</u>	<u>\$19,101,253.72</u>	<u>\$40,326,643.11</u>	<u>\$29,541,121.40</u>	<u>59,899,149.00</u>	<u>\$160,271,088.00</u>

SCHEDULE IIIFINANCE

2.2 The following is a summary of Income collected for the period 1990 to 1995

<u>CATEGORY</u>	<u>1990</u> \$	<u>1991</u> \$	<u>1992</u> \$	<u>1993</u> \$	<u>1994</u> \$	<u>1995</u> \$
Levies	6,498,991.00	14,769,365.00	23,178,309.00	113,311,320.00	117,884,665.00	102,472,500.00
Sale of Lots	238,097.45	355,583.35	308,272.46	335,069.80	261,641.00	988,900.00
Loan Repayment	132,098.28	168,051.73	103,237.30	72,387.63	80,294.00	42,348.00
Interest on Investments	214,986.00	1,553,860.56	1,581,477.80	842,586.36	920,748.36	911,890.00
Miscellaneous	38,446.97	150,737.00	107,996.00	108,042.00	87,125.00	55,715.00
	<u>\$7,122,619.70</u>	<u>\$16,997,597.64</u>	<u>\$25,279,292.56</u>	<u>\$114,669,405.79</u>	<u>\$119,234,473.36</u>	<u>\$104,471,353.00</u>